

Les cartes SOS orthographe

Niveau 1



La lettre

A a

Exemple :



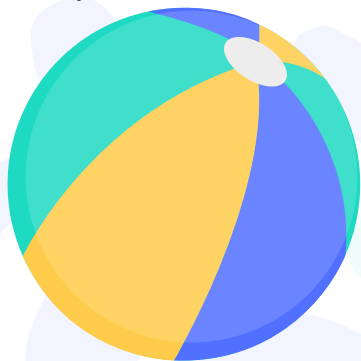
Avion



La lettre

B b

Exemple :



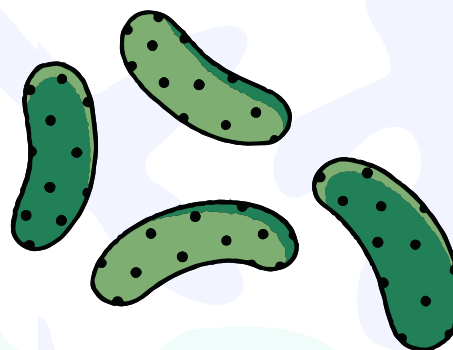
Ballon



La lettre

C c

Exemple :



Cornichon

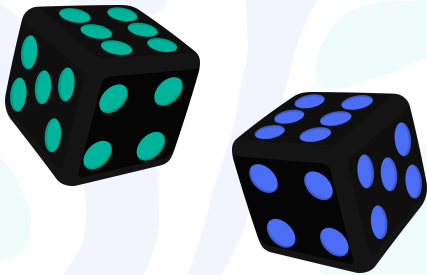




La lettre

D d

Exemple :



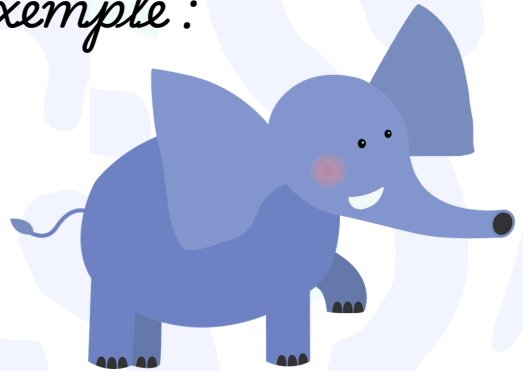
Dés



La lettre

E e

Exemple :



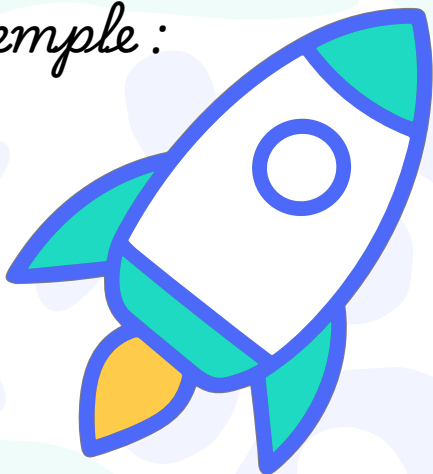
Éléphant



La lettre

F f

Exemple :



Fusée



La lettre

G g

Exemple :



Garage

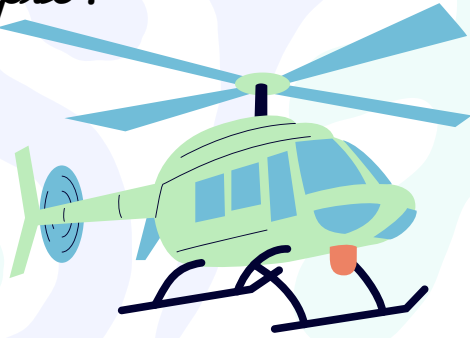




La lettre

H h

Exemple :



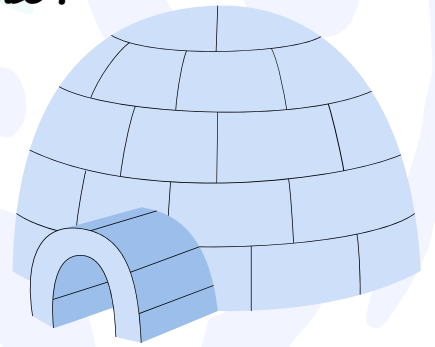
Hélicoptère



La lettre

I i

Exemple :



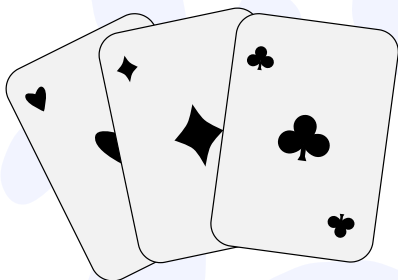
Igloo



La lettre

J j

Exemple :



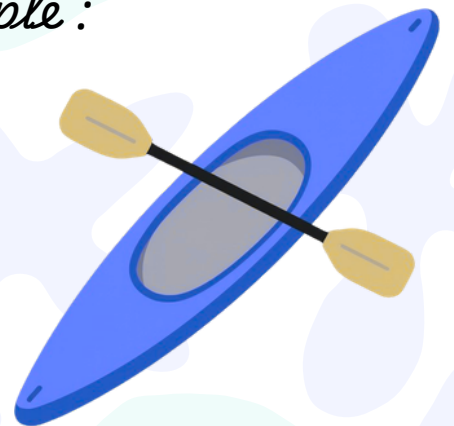
Jeux



La lettre

K k

Exemple :



Kayak





La lettre

L l

Exemple :



Lune



La lettre

M m

Exemple :



Maison



La lettre

N n

Exemple :



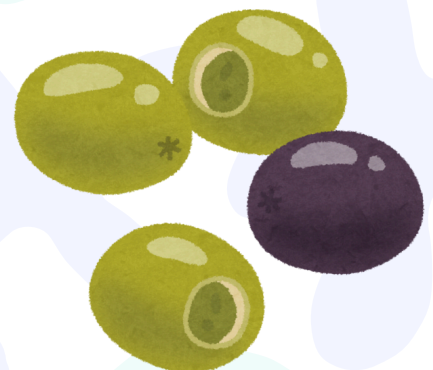
Nounours



La lettre

O o

Exemple :



Olive





La lettre

P p

Exemple :



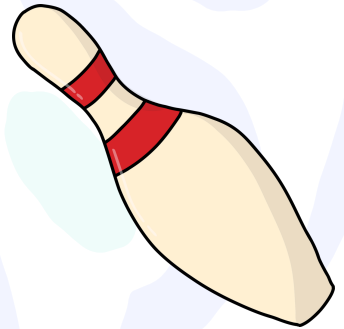
Parapluie



La lettre

Q q

Exemple :



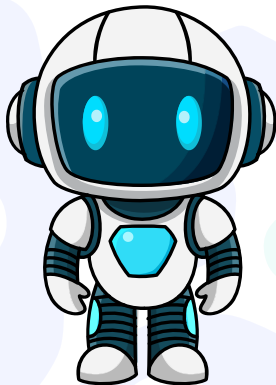
Quille



La lettre

R r

Exemple :



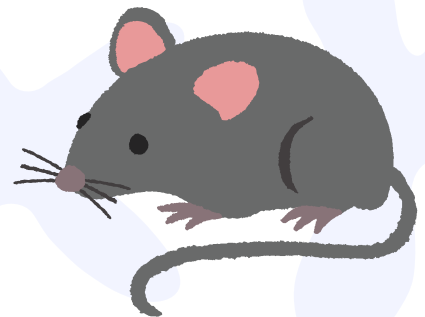
Robot



La lettre

S s

Exemple :



Souris

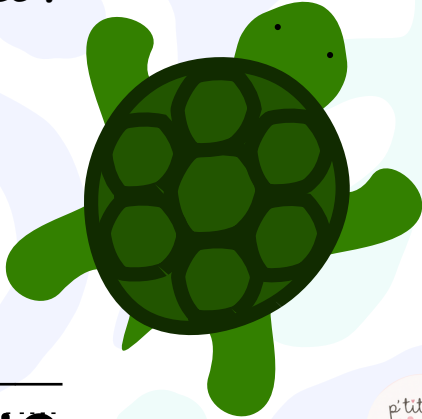




La lettre

T t

Exemple :



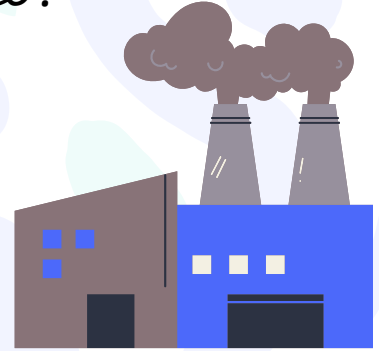
Tortue



La lettre

U u

Exemple :



Usine



La lettre

V v

Exemple :



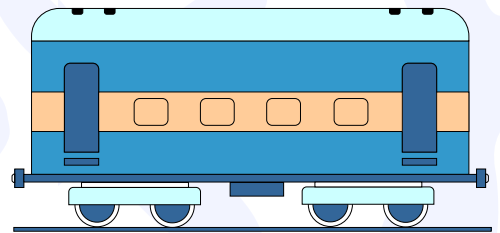
Vélo



La lettre

W w

Exemple :



Wagon

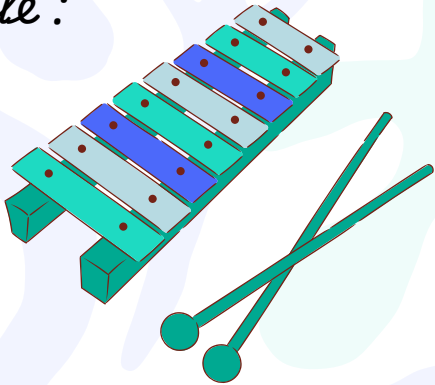




La lettre

X x

Exemple :



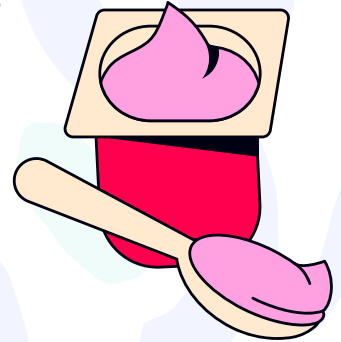
Xylophone



La lettre

Y y

Exemple :



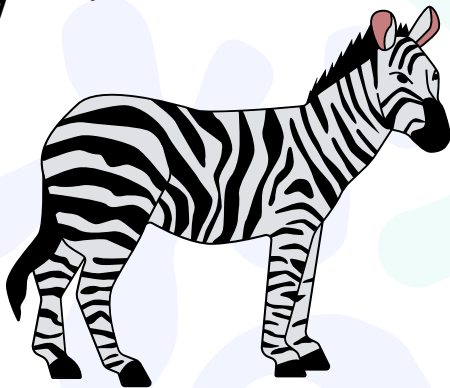
Yaourt



La lettre

Z z

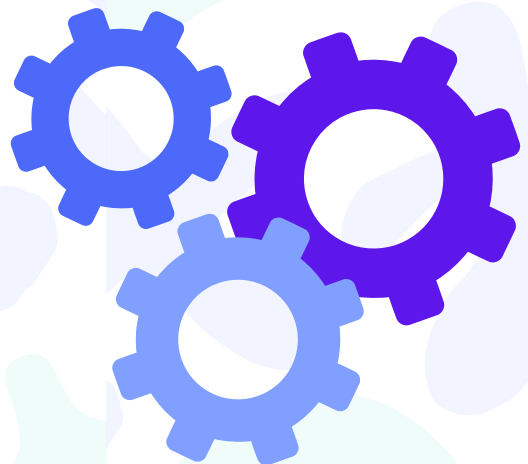
Exemple :



Zèbre



Les graphies complexes





Le digraphe

CH ch

Exemple :



Chat



Le digraphe

GN gn

Exemple :



Montagne



Le digraphe

OU ou

Exemple :



Ours



Les digraphes

AN/EN

an/en

Exemple :



Enfant





Le digraphe

IN in

Exemple :



Raisin



Le digraphe

OI oi

Exemple :



Oiseau



Le digraphe

ON on

ou, OM/om devant M/B/P

Exemple :



Balcon



Le digraphe

AU au

ou, EAU/eau en fin de mot

Exemple :



Autruche



Le digraphe

AI ai

Exemple :



Raisin



Le digraphe

EI ei

Exemple :



Reine

